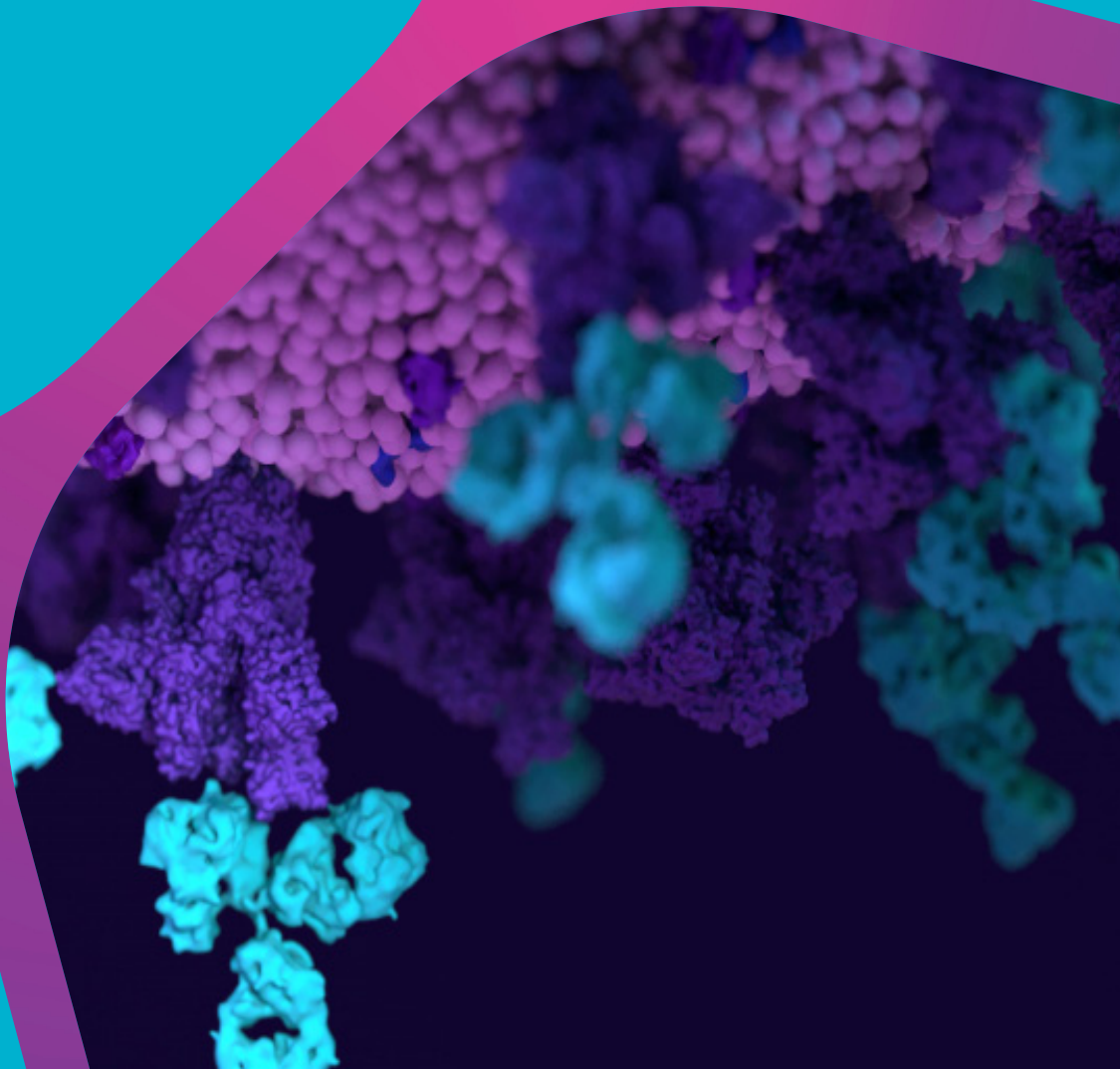




# Recombinant Antibodies Optimized for *In Vivo* Research

Engineered for Mechanistic Clarity and Reproducible Performance



## Recombinant Antibodies Optimized for *In Vivo* Research

*Ultrapure, Low Endotoxin and Engineered for Mechanistic Clarity in In Vivo Research*

Bio X Cell is the global leader in functional, *in vivo*-ready antibodies engineered to modulate biology, not just detect it.

Most antibodies leave Fc behavior to chance. Recombinant antibodies from Bio X Cell don't. Defined Fc profiles give you deliberate control over immune effector interactions.

Your data should reflect biology, not noise.

### What Sets Bio X Cell Recombinant Antibodies Apart

#### Fc-Engineered for Mechanistic Clarity

Off-the-shelf Fc-silent and Fc-active variants  
Effector function tuned to study intent

#### Species-Matched Molecular Frameworks

Mouse- and human-matched effector formats  
Same variable region across formats

#### *In Vivo*-Ready Production & QC

Ultra-pure, low endotoxin, low aggregation  
Pathogen screened, controlled release QC

#### Study-Scale Consistency

Single-lot supply for cohorts  
Ready-to-ship engineered formats

### Research Advantages At-a-Glance

Designed for studies where data quality, timeline confidence, and program continuity matter.

- ✓ **Clearer biology:** Fc-engineered and Fc-silent formats help avoid unintended immune effects
- ✓ **More reliable repeat dosing:** Species-matched Fc reduce immunogenicity & exposure drift
- ✓ **Lower background noise:** Low endotoxin and low aggregation reduce cytokine artifacts
- ✓ **Fewer mid-study changes:** Sequence-defined reagents support lot-to-lot consistency
- ✓ **Easier scale-up:** Consistent supply supports cohort expansion without changing reagents

## Why Researchers Choose Bio X Cell



### Ultra-Pure, *In Vivo*-Ready

≥95% purity, low endotoxin, controlled aggregation for sensitive biology



### Built for Living Systems

Antibodies designed to perform reliably in *in vivo* models



### Peer-Reviewed Trust

Cited in nearly 30,000 publications worldwide



### Program-Scale Reliability

Single-lot supply and ready-to-ship formats support uninterrupted studies

## Built for Translational Research Workflows

- ✓ Mechanism of action validation studies
- ✓ Immune cell depletion and modulation
- ✓ Immune checkpoint blockade and agonist studies
- ✓ Combination immunotherapy research
- ✓ PK/PD and repeat-dose models
- ✓ Translational and comparative *in vivo* studies

## Featured Ready-to-Ship Functional Recombinant Antibodies

Explore key targets with pre-engineered formats designed to support specific *in vivo* study needs.

Target	Standard IgG Option Available	Fc-Silenced	Fc-Engineered	Bispecific Formats <sup>†</sup>	Citations
PD-1	✓	✓	✓	✓	2.1K+
CTLA-4	✓	✓	✓	✓	630+
CD40	✓	–	✓	–	150+
4-1BB	✓	✓	–	–	90+
OX40	✓	✓	–	–	50+
TNFα	✓	–	✓	–	170+

\* Additional Fc-engineered formats available for PD-1, including variants with combined Fc-silencing and stabilizing mutations. Contact a scientific expert or visit [bioxcell.com/in-vivo-recombinant-antibodies](https://www.bioxcell.com/in-vivo-recombinant-antibodies) for the complete format listing.

<sup>†</sup>Custom recombinant bispecific antibodies available to meet your study needs.

## Custom Recombinant Solutions

---

For programs requiring specialized formats, higher volumes, or growing program demands, Bio X Cell offers collaborative recombinant engineering services.

- ✔ Bispecifics, fragments, Fc fusions, and advanced architectures
- ✔ Species and isotype switching to match study biology
- ✔ Mammalian expression (HEK or CHO)
- ✔ *In vivo*-aligned purification, QC, and formulation



Discuss custom recombinant formats for your study. Visit [bioxcell.com/custom-antibody-services](https://www.bioxcell.com/custom-antibody-services)



**Antibody Solutions for Breakthrough Discovery**

39 Labombard Road, Lebanon, NH 03766, USA |  
info@bioxcell.com | +1 866-787-3444 | [bioxcell.com](https://www.bioxcell.com)

