

Technical Data Sheet



InVivoSIM anti-human IL1RAP (IL-1R3) (Nadunolimab biosimilar)

Attention: Use of this product constitutes an agreement to Bio X Cell's Terms and Conditions which are included with this product in print and can also be found at <https://bioxcell.com/terms-and-conditions>.

Lot Specific Information

Lot Number: Lot Specific*
Volume: Lot Specific*
Concentration: Lot Specific* (generally 4 to 11 mg/ml) *
Total Protein: Lot Specific*

*This information will be noted on the certificate of analysis that ships with this product.

Product Information

Catalog Number: SIM0093
Clone: Nadunolimab
Isotype: Human IgG1, κ
Recommended Isotype Control(s): RecombiMAb human IgG1 isotype control, anti-hen egg lysozyme
Recommended Dilution Buffer: InVivoPure pH 7.0 Dilution Buffer
Immunogen: Human IL1RAP
Reported Applications: *in vivo* functional assays
in vitro functional assays
ELISA
Flow cytometry
Formulation: PBS, pH 7.0
Contains no stabilizers or preservatives
Endotoxin: $\leq 0.5\text{EU/mg}$ ($\leq 0.0005\text{EU}/\mu\text{g}$)
Determined by LAL assay
Purity: $\geq 95\%$
Determined by SDS-PAGE
Sterility: $0.2\ \mu\text{m}$ filtration
Production: Purified from cell culture supernatant in an animal-free facility
Purification: Protein A
Aggregation: $< 5\%$
Determined by SEC
RRID:
Molecular Weight: 150 kDa

Murine Pathogen Test Results

Mouse Norovirus: Negative, Mouse Parvovirus: Negative, Mouse Minute Virus: Negative, Mouse Hepatitis Virus: Negative, Reovirus Screen: Negative, Lymphocytic Choriomeningitis virus: Negative, Lactate Dehydrogenase-Elevating Virus: Negative, Mouse Rotavirus: Negative, Theiler's Murine Encephalomyelitis: Negative, Ectromelia/Mousepox Virus: Negative, Hantavirus: Negative, Polyoma Virus: Negative, Mouse Adenovirus: Negative, Sendai Virus: Negative, Mycoplasma Pulmonis: Negative, Pneumonia Virus of Mice: Negative, Mouse Cytomegalovirus: Negative, K Virus: Negative

Description

This non-therapeutic biosimilar antibody uses the same variable regions as the therapeutic antibody Nadunolimab, making it ideal for research use. Nadunolimab is a fully human IgG1 monoclonal antibody that targets the interleukin-1 receptor accessory protein (IL1RAP), a co-receptor required for signaling through IL-1 family cytokine receptors including IL-1R1, IL-1R2, IL-33R (ST2), and IL-36 receptors. IL1RAP is overexpressed on a wide range of tumor types, including non-small cell lung cancer (NSCLC), pancreatic ductal adenocarcinoma (PDAC), and several hematologic malignancies, but is expressed at limited levels in normal tissues, making it an attractive therapeutic target. By binding IL1RAP, Nadunolimab blocks

downstream IL-1 family signaling, which reduces tumor-promoting inflammation, inhibits NF- κ B activation, and diminishes secretion of pro-tumor cytokines. In addition, Nadunolimab's IgG1 Fc region enables potent antibody-dependent cell-mediated cytotoxicity (ADCC), facilitating direct killing of IL1RAP-expressing tumor cells. Nadunolimab has shown promising clinical activity in solid tumors particularly in combination with chemotherapy by modulating the inflammatory tumor microenvironment and promoting immune-mediated tumor clearance. This Nadunolimab biosimilar is well suited for studying IL-1 family receptor biology, tumor-associated inflammation, IL1RAP-dependent signaling, myeloid-driven immunosuppression, and therapeutic strategies targeting IL1RAP-expressing cancers.

Storage

Store at the stock concentration at 4°C . **Do not freeze.**

It is not uncommon for a floccule or precipitate to appear during storage. The floccule is typically buffer salts precipitating out of solution or a small bit of protein aggregation. For information on how to remove floccules or precipitates see our FAQ's at <https://bioxcell.com/faqs>.

Protocol Information

Since applications vary, each investigator should use the application references as a guide to help estimate the appropriate dose or concentration. The dose or concentration can be further optimized experimentally in a dose response or titration experiment.

Application References

For a complete list of references, visit

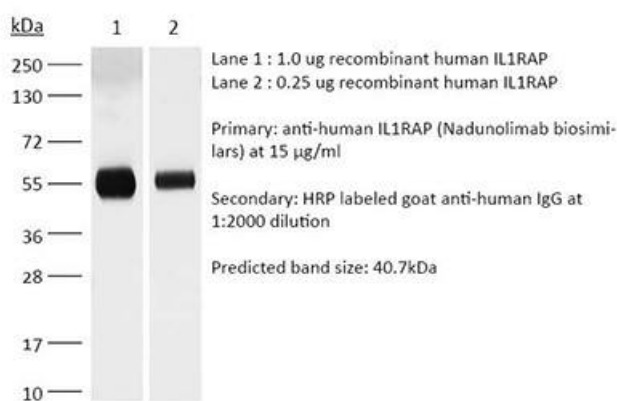
https://bioxcell.com/sim0093?bxcs=9k1b3a#tab_references

or scan the QR code below.



Binding Validation

Validation data shown below confirms that this clone binds to its target antigen. For lot specific binding validation data, e-mail technicalservice@bioxcell.com.



Bio X Cell, LLC

<https://bioxcell.com>

+1-866-787-3444

customerservice@bioxcell.com

Conditions: For research use only. Not for human use. Not for use in diagnostic or therapeutic procedures.

Not for resale.

Bio X Cell, Bio X Cell logo, and all other trademarks are the property of Bio X Cell, LLC © 2025 Bio X Cell, LLC