

Technical Data Sheet

InVivoSIM anti-human IL-6R (Sarilumab Biosimilar)



Attention: Use of this product constitutes an agreement to Bio X Cell's Terms and Conditions which are included with this product in print and can also be found at <https://bioxcell.com/terms-and-conditions>.

Lot Specific Information

Lot Number: Lot Specific*
Volume: Lot Specific*
Concentration: Lot Specific* (generally 4 to 11 mg/ml) *
Total Protein: Lot Specific*

*This information will be noted on the certificate of analysis that ships with this product.

Product Information

Catalog Number:	SIM0085
Clone:	Sarilumab
Isotype:	Human IgG1, κ
Recommended Dilution Buffer:	InVivoPure pH 7.0 Dilution Buffer
Mutations:	E356D/M358L
Immunogen:	Human IL-6R
Reported Applications:	<i>in vivo</i> functional assays <i>in vitro</i> functional assays Flow cytometry Western blot ELISA
Formulation:	pH 7.0 Contains no stabilizers or preservatives
Endotoxin:	<0.5EU/mg (<0.0005EU/ μ g) Determined by LAL gel clotting assay
Purity:	>95% Determined by SDS-PAGE
Sterility:	0.2 μ m filtration
Production:	Purified from cell culture supernatant in an animal-free facility
Purification:	Protein A
Aggregation:	<5% Determined by SEC
RRID:	
Molecular Weight:	150 kDa

Murine Pathogen Test Results

Mouse Norovirus: Negative, Mouse Parvovirus: Negative, Mouse Minute Virus: Negative, Mouse Hepatitis Virus: Negative, Reovirus Screen: Negative, Lymphocytic Choriomeningitis virus: Negative, Lactate Dehydrogenase-Elevating Virus: Negative, Mouse Rotavirus: Negative, Theiler's Murine Encephalomyelitis: Negative, Ectromelia/Mousepox Virus: Negative, Hantavirus: Negative, Polyoma Virus: Negative, Mouse Adenovirus: Negative, Sendai Virus: Negative, Mycoplasma Pulmonis: Negative, Pneumonia Virus of Mice: Negative, Mouse Cytomegalovirus: Negative, K Virus: Negative

Description

This non-therapeutic biosimilar antibody uses the same variable regions as the therapeutic antibody, Sarilumab, making it ideal for research use. Sarilumab is a humanized IgG1 monoclonal antibody that reacts with the interleukin 6 receptor (IL-6R), also known as CD126, IL6RA, gp80, IL6Q, and HIES5. IL-6R is an 80 kDa potent pleiotropic type I cytokine that

regulates cell growth and differentiation and plays an important role in the immune response. IL-6R is expressed by activated T and B lymphocytes, monocytes, hepatocytes, plasma cells, and retinal endothelial cells. The IL-6R α chain binds IL-6 but requires complexing with gp130 to initiate signaling pathways (e.g., the Jak/STAT and the MAPK pathways). The IL-6R complex is involved in antigen-specific immune responses, inflammatory responses, and neuronal development and is a major mediator of the acute phase reaction. Monoclonal antibodies, such as Sarilumab, are useful for blocking IL-6R activation in in vitro and in vivo research experiments by binding to and neutralizing the function of IL-6R. Sarilumab is reported to bind monomeric IL-6R and dimeric IL-6R Fc-fusion protein with high affinity (over 15x higher than tocilizumab). Sarilumab is reactive against human and cynomolgus monkey species, but it does not bind mouse IL-6R.

Storage

Store at the stock concentration at 4°C . **Do not freeze.**

It is not uncommon for a floccule or precipitate to appear during storage. The floccule is typically buffer salts precipitating out of solution or a small bit of protein aggregation. For information on how to remove floccules or precipitates see our FAQ's at <https://bioxcell.com/faqs>.

Protocol Information

Since applications vary, each investigator should use the application references as a guide to help estimate the appropriate dose or concentration. The dose or concentration can be further optimized experimentally in a dose response or titration experiment.

Application References

For a complete list of references, visit

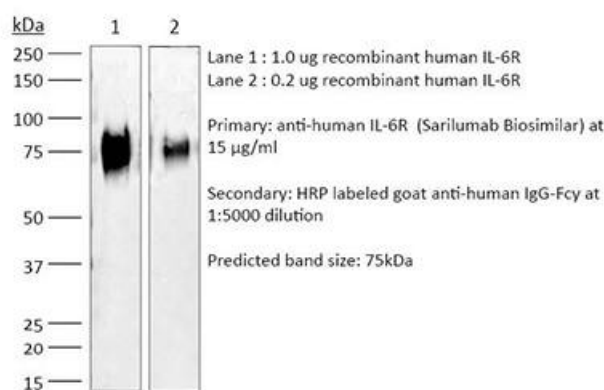
https://bioxcell.com/sim0085?bxcs=9k1b3a#tab_references

or scan the QR code below.



Binding Validation

Validation data shown below confirms that this clone binds to its target antigen. For lot specific binding validation data, e-mail technicalservice@bioxcell.com.



Bio X Cell, LLC

<https://bioxcell.com>

+1-866-787-3444

customerservice@bioxcell.com

Conditions: For research use only. Not for human use. Not for use in diagnostic or therapeutic procedures.

Not for resale.

Bio X Cell, Bio X Cell logo, and all other trademarks are the property of Bio X Cell, LLC © 2025 Bio X Cell, LLC