

Technical Data Sheet

InVivoSIM anti-human CD40 (Sotigalimab Biosimilar)



Attention: Use of this product constitutes an agreement to Bio X Cell's Terms and Conditions which are included with this product in print and can also be found at <https://bioxcell.com/terms-and-conditions>.

Lot Specific Information

Lot Number: Lot Specific*
Volume: Lot Specific*
Concentration: Lot Specific* (generally 4 to 11 mg/ml) *
Total Protein: Lot Specific*

*This information will be noted on the certificate of analysis that ships with this product.

Product Information

Catalog Number:	SIM0072
Clone:	Sotigalimab
Isotype:	Human IgG1, κ
Recommended Dilution Buffer:	InVivoPure pH 7.0 Dilution Buffer
Mutations:	S267E/E356D/M358L
Immunogen:	Human CD40
Reported Applications:	Functional assays Flow cytometry ELISA
Formulation:	PBS, pH 7.0 Contains no stabilizers or preservatives
Endotoxin:	<0.5EU/mg (<0.0005EU/ μ g) Determined by LAL gel clotting assay
Purity:	>95% Determined by SDS-PAGE
Sterility:	0.2 μ m filtration
Production:	Purified from cell culture supernatant in an animal-free facility
Purification:	Protein A
Aggregation:	<5% Determined by SEC
RRID:	
Molecular Weight:	150 kDa

Murine Pathogen Test Results

Mouse Norovirus: Negative, Mouse Parvovirus: Negative, Mouse Minute Virus: Negative, Mouse Hepatitis Virus: Negative, Reovirus Screen: Negative, Lymphocytic Choriomeningitis virus: Negative, Lactate Dehydrogenase-Elevating Virus: Negative, Mouse Rotavirus: Negative, Theiler's Murine Encephalomyelitis: Negative, Ectromelia/Mousepox Virus: Negative, Hantavirus: Negative, Polyoma Virus: Negative, Mouse Adenovirus: Negative, Sendai Virus: Negative, Mycoplasma Pulmonis: Negative, Pneumonia Virus of Mice: Negative, Mouse Cytomegalovirus: Negative, K Virus: Negative

Description

This non-therapeutic biosimilar antibody uses the same variable regions as the therapeutic antibody Sotigalimab, making it ideal for research use. Sotigalimab is a humanized IgG1 monoclonal antibody that targets CD40, also known as tumor necrosis factor receptor superfamily member 5 (TNFRSF5), P50, and CDW40. CD40 is a pivotal co-stimulatory receptor that is expressed by both non-immune cells (e.g., epithelial malignancies) as well as immune cells, including antigen-presenting cells such as dendritic cells, macrophages, and B lymphocytes. CD40's interaction with its ligand CD40L

(CD154) is essential to the activation of T cells (including CD8+ T cells), the maturation of B cells, and various immune system-related pathophysiological conditions. In cancers, the CD40-CD40L interaction can have different outcomes depending on the level of engagement, potentially promoting cell survival at low levels and inducing cell death at high levels. Consistent with CD40 engagement, experimental studies involving advanced solid tumors and the use of high-affinity CD40-agonistic antibody Sotigalimab have demonstrated this antibody to produce dose-dependent increases in APCs and T-cell activation. The sotigalimab biosimilar antibody is a valuable tool to explore and harness the power of CD40 signaling, immune cell activation, and anti-cancer immuno-therapeutics development.

Storage

Store at the stock concentration at 4°C . **Do not freeze.**

It is not uncommon for a floccule or precipitate to appear during storage. The floccule is typically buffer salts precipitating out of solution or a small bit of protein aggregation. For information on how to remove floccules or precipitates see our FAQ's at <https://bioxcell.com/faqs>.

Protocol Information

Since applications vary, each investigator should use the application references as a guide to help estimate the appropriate dose or concentration. The dose or concentration can be further optimized experimentally in a dose response or titration experiment.

Application References

For a complete list of references, visit

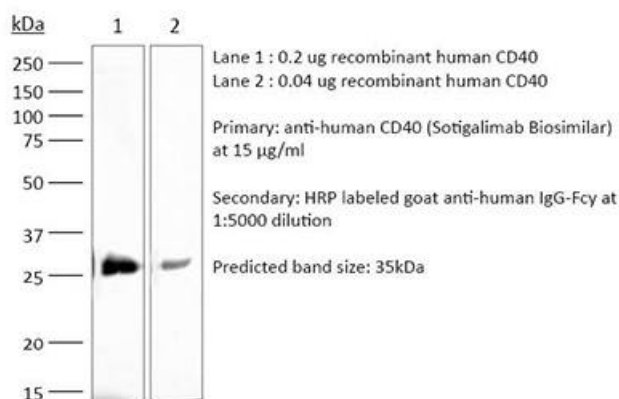
https://bioxcell.com/sim0072?bxcs=9k1b3a#tab_references

or scan the QR code below.



Binding Validation

Validation data shown below confirms that this clone binds to its target antigen. For lot specific binding validation data, e-mail technicalservice@bioxcell.com.



Bio X Cell, LLC

<https://bioxcell.com>

+1-866-787-3444

customerservice@bioxcell.com

Conditions: For research use only. Not for human use. Not for use in diagnostic or therapeutic procedures.

Not for resale.

Bio X Cell, Bio X Cell logo, and all other trademarks are the property of Bio X Cell, LLC © 2025 Bio X Cell, LLC