

Technical Data Sheet

InVivoSIM anti-human AXL (Tilvestamab Biosimilar)



Attention: Use of this product constitutes an agreement to Bio X Cell's Terms and Conditions which are included with this product in print and can also be found at <https://bioxcell.com/terms-and-conditions>.

Lot Specific Information

Lot Number: Lot Specific*
Volume: Lot Specific*
Concentration: Lot Specific* (generally 4 to 11 mg/ml) *
Total Protein: Lot Specific*

*This information will be noted on the certificate of analysis that ships with this product.

Product Information

Catalog Number:	SIM0065
Clone:	Tilvestamab
Isotype:	Human IgG1, κ
Recommended Isotype Control(s):	RecombiMAb human IgG1 isotype control, anti-hen egg lysozyme
Recommended Dilution Buffer:	InVivoPure pH 7.0 Dilution Buffer
Immunogen:	Human AXL
Reported Applications:	Functional assays Flow cytometry Western blot ELISA <i>in vivo</i> studies using xenograft models
Formulation:	PBS, pH 7.0 Contains no stabilizers or preservatives
Endotoxin:	<0.5EU/mg (<0.0005EU/ μ g) Determined by LAL gel clotting assay
Purity:	>95% Determined by SDS-PAGE
Sterility:	0.2 μ m filtration
Production:	Purified from cell culture supernatant in an animal-free facility
Purification:	Protein A
Aggregation:	<5% Determined by SEC
RRID:	
Molecular Weight:	150 kDa

Murine Pathogen Test Results

Mouse Norovirus: Negative, Mouse Parvovirus: Negative, Mouse Minute Virus: Negative, Mouse Hepatitis Virus: Negative, Reovirus Screen: Negative, Lymphocytic Choriomeningitis virus: Negative, Lactate Dehydrogenase-Elevating Virus: Negative, Mouse Rotavirus: Negative, Theiler's Murine Encephalomyelitis: Negative, Ectromelia/Mousepox Virus: Negative, Hantavirus: Negative, Polyoma Virus: Negative, Mouse Adenovirus: Negative, Sendai Virus: Negative, Mycoplasma Pulmonis: Negative, Pneumonia Virus of Mice: Negative, Mouse Cytomegalovirus: Negative, K Virus: Negative

Description

This non-therapeutic biosimilar antibody utilizes the same variable regions as the therapeutic antibody Tilvestamab making it ideal for research use. Tilvestamab targets the AXL receptor tyrosine kinase, a member of the TAM (Tyro3, AXL, Mer) family. AXL is overexpressed in various malignancies, including renal cell carcinoma, non-small cell lung cancer, pancreatic

cancer, and triple-negative breast cancer, and is associated with tumor progression, metastasis, and resistance to therapy. By binding to the extracellular domain of AXL, Tilvestamab inhibits the interaction with its ligand Gas6, thereby blocking downstream signaling pathways such as PI3K/AKT and MAPK/ERK. This blockade results in the suppression of tumor cell proliferation, migration, and survival. Preclinical studies have demonstrated that Tilvestamab effectively reduces AXL activation and downstream signaling, leading to decreased tumor growth in vivo. This biosimilar antibody serves as a valuable tool for studying AXL-mediated signaling, tumor biology, and the development of AXL-targeted therapies.

Storage

Store at the stock concentration at 4°C . **Do not freeze.**

It is not uncommon for a floccule or precipitate to appear during storage. The floccule is typically buffer salts precipitating out of solution or a small bit of protein aggregation. For information on how to remove floccules or precipitates see our FAQ's at <https://bioxcell.com/faqs>.

Protocol Information

Since applications vary, each investigator should use the application references as a guide to help estimate the appropriate dose or concentration. The dose or concentration can be further optimized experimentally in a dose response or titration experiment.

Application References

For a complete list of references, visit

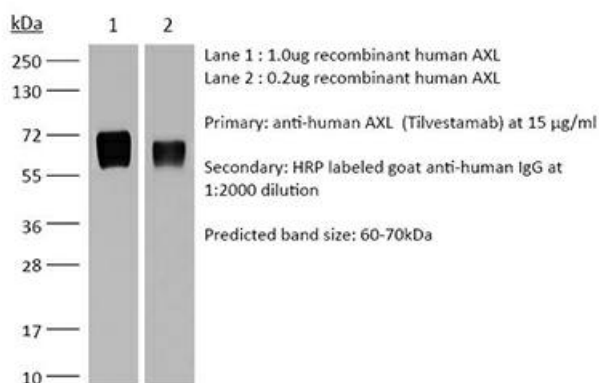
https://bioxcell.com/sim0065?bxcs=9k1b3a#tab_references

or scan the QR code below.



Binding Validation

Validation data shown below confirms that this clone binds to its target antigen. For lot specific binding validation data, e-mail technicalservice@bioxcell.com.



Bio X Cell, LLC

<https://bioxcell.com>

+1-866-787-3444

customerservice@bioxcell.com

Conditions: For research use only. Not for human use. Not for use in diagnostic or therapeutic procedures.

Not for resale.

Bio X Cell, Bio X Cell logo, and all other trademarks are the property of Bio X Cell, LLC © 2025 Bio X Cell, LLC