

# Technical Data Sheet

## InVivoSIM anti-human IL-6 (Siltuximab Biosimilar)



**Attention:** Use of this product constitutes an agreement to Bio X Cell's Terms and Conditions which are included with this product in print and can also be found at <https://bioxcell.com/terms-and-conditions>.

### Lot Specific Information

**Lot Number:** Lot Specific\*  
**Volume:** Lot Specific\*  
**Concentration:** Lot Specific\* (generally 4 to 11 mg/ml) \*  
**Total Protein:** Lot Specific\*

\*This information will be noted on the certificate of analysis that ships with this product.

### Product Information

**Catalog Number:** SIM0030  
**Clone:** Siltuximab  
**Isotype:** Human IgG1,  $\kappa$   
**Recommended Isotype Control(s):** RecombiMAb human IgG1 isotype control, anti-hen egg lysozyme  
**Recommended Dilution Buffer:** InVivoPure pH 7.0 Dilution Buffer  
**Immunogen:** Human IL-6  
**Reported Applications:** Functional assays  
ELISA  
**Formulation:** PBS, pH 7.0  
Contains no stabilizers or preservatives  
**Endotoxin:** <1EU/mg (<0.001EU/ $\mu$ g)  
Determined by LAL gel clotting assay  
**Purity:** >95%  
Determined by SDS-PAGE  
**Sterility:** 0.2  $\mu$ m filtration  
**Production:** Purified from cell culture supernatant in an animal-free facility  
**Purification:** Protein A  
**Aggregation:** <5%  
Determined by SEC  
**RRID:**  
**Molecular Weight:** 150 kDa

### Murine Pathogen Test Results

Mouse Norovirus: Negative, Mouse Parvovirus: Negative, Mouse Minute Virus: Negative, Mouse Hepatitis Virus: Negative, Reovirus Screen: Negative, Lymphocytic Choriomeningitis virus: Negative, Lactate Dehydrogenase-Elevating Virus: Negative, Mouse Rotavirus: Negative, Theiler's Murine Encephalomyelitis: Negative, Ectromelia/Mousepox Virus: Negative, Hantavirus: Negative, Polyoma Virus: Negative, Mouse Adenovirus: Negative, Sendai Virus: Negative, Mycoplasma Pulmonis: Negative, Pneumonia Virus of Mice: Negative, Mouse Cytomegalovirus: Negative, K Virus: Negative

### Description

This non-therapeutic biosimilar antibody uses the same variable regions from the therapeutic antibody Siltuximab making it ideal for research use. This Siltuximab biosimilar reacts human IL-6 (interleukin-6) a 21-28 kDa cytokine that is expressed by many cell types, including T lymphocytes, B lymphocytes, monocytes, fibroblasts, and endothelial cells. IL-6 signals through a cell-surface type I cytokine receptor complex consisting of the ligand-binding IL-6R $\alpha$  chain (CD126), and the signal-transducing component gp130 (also called CD130). Upon receptor binding IL-6 influences antigen-specific immune responses, inflammatory responses, neuronal development, and is a major mediator of the acute phase reaction. Siltuximab

blocks the binding of IL-6 to soluble and membrane bound IL-6R.

## Storage

Store at the stock concentration at 4°C. **Do not freeze.**

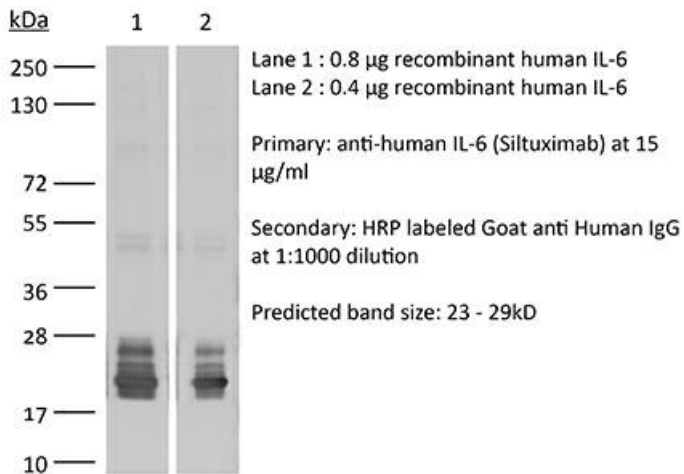
It is not uncommon for a floccule or precipitate to appear during storage. The floccule is typically buffer salts precipitating out of solution or a small bit of protein aggregation. For information on how to remove floccules or precipitates see our FAQ's at <https://bioxcell.com/faqs>.

## Protocol Information

Since applications vary, each investigator should use the application references as a guide to help estimate the appropriate dose or concentration. The dose or concentration can be further optimized experimentally in a dose response or titration experiment.

## Binding Validation

Validation data shown below confirms that this clone binds to its target antigen. For lot specific binding validation data, e-mail [technicalservice@bioxcell.com](mailto:technicalservice@bioxcell.com).



### Bio X Cell, LLC

<https://bioxcell.com>

+1-866-787-3444

[customerservice@bioxcell.com](mailto:customerservice@bioxcell.com)

*Conditions: For research use only. Not for human use. Not for use in diagnostic or therapeutic procedures.*

*Not for resale.*

**Bio X Cell, Bio X Cell logo, and all other trademarks are the property of Bio X Cell, LLC © 2024 Bio X Cell, LLC**