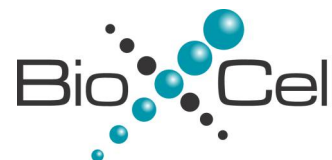


Technical Data Sheet

InVivoSIM anti-human CD20 (Rituximab Biosimilar)



Attention: Use of this product constitutes an agreement to Bio X Cell's Terms and Conditions which are included with this product in print and can also be found at <https://bioxcell.com/terms-and-conditions>.

Lot Specific Information

Lot Number: Lot Specific*
Volume: Lot Specific*
Concentration: Lot Specific* (generally 4 to 11 mg/ml) *
Total Protein: Lot Specific*

*This information will be noted on the certificate of analysis that ships with this product.

Product Information

| | |
|--|---|
| Catalog Number: | SIM0008 |
| Clone: | Rituximab |
| Isotype: | Human IgG1 |
| Recommended Isotype Control(s): | RecombiMAb human IgG1 isotype control, anti-hen egg lysozyme |
| Recommended Dilution Buffer: | InVivoPure pH 7.0 Dilution Buffer |
| Immunogen: | Human lymphoblastoid cell line SB |
| Reported Applications: | Flow Cytometry ELISA Western Blot |
| Formulation: | PBS, pH 7.0 Contains no stabilizers or preservatives |
| Endotoxin: | <1EU/mg (<0.001EU/μg) Determined by LAL gel clotting assay |
| Purity: | >95% Determined by SDS-PAGE |
| Sterility: | 0.2 μm filtration |
| Production: | Purified from cell culture supernatant in an animal-free facility |
| Purification: | Protein A |
| Aggregation: | <5% Determined by SEC |
| RRID: | AB_2894729 |
| Molecular Weight: | 150 kDa |

Murine Pathogen Test Results

Mouse Norovirus: Negative, Mouse Parvovirus: Negative, Mouse Minute Virus: Negative, Mouse Hepatitis Virus: Negative, Reovirus Screen: Negative, Lymphocytic Choriomeningitis virus: Negative, Lactate Dehydrogenase-Elevating Virus: Negative, Mouse Rotavirus: Negative, Theiler's Murine Encephalomyelitis: Negative, Ectromelia/Mousepox Virus: Negative, Hantavirus: Negative, Polyoma Virus: Negative, Mouse Adenovirus: Negative, Sendai Virus: Negative, Mycoplasma Pulmonis: Negative, Pneumonia Virus of Mice: Negative, Mouse Cytomegalovirus: Negative, K Virus: Negative

Description

This non-therapeutic biosimilar antibody uses the same variable regions from the therapeutic antibody Rituximab making it ideal for research use. This Rituximab biosimilar reacts with human CD20. CD20 is a B cell-specific 33-37 kDa transmembrane protein which is also known as B-lymphocyte antigen, B1, and Bp35. CD20 plays roles in intracellular calcium regulation and B cell activation and is critical for an optimal B cell immune response against T-independent antigens. CD20 is first expressed after the induction of CD19 together with IgM during the pre-B to immature B cell transition

in the bone marrow. It's expression then increases during maturation with almost all mature B cells expressing some level of CD20. However, CD20 is not expressed by plasma blasts or plasma cells. CD20 is expressed by most B cell neoplasms, and is useful in diagnosing B cell lymphomas and leukemia's. Many anti-CD20 monoclonal antibodies are currently being used to successfully treat leukemia's, lymphomas, and various autoimmune diseases. Rituximab has depleting activity and mediates ADCC and CDC of CD20+ cells. This results in the elimination of B cells from the body.

Storage

Store at the stock concentration at 4°C. **Do not freeze.**

It is not uncommon for a floccule or precipitate to appear during storage. The floccule is typically buffer salts precipitating out of solution or a small bit of protein aggregation. For information on how to remove floccules or precipitates see our FAQ's at <https://bioxcell.com/faqs>.

Protocol Information

Since applications vary, each investigator should use the application references as a guide to help estimate the appropriate dose or concentration. The dose or concentration can be further optimized experimentally in a dose response or titration experiment.

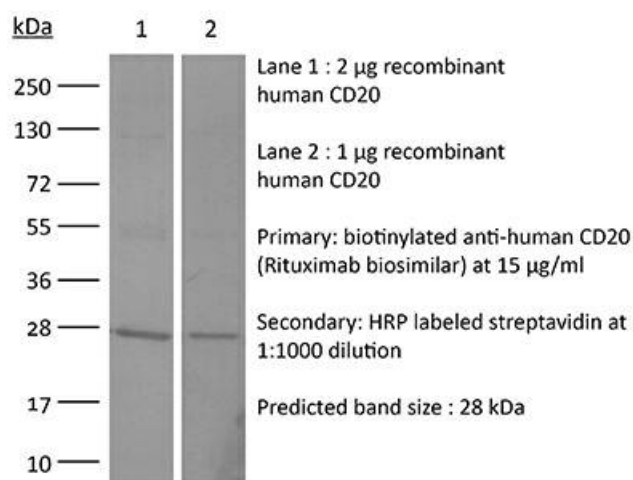
Application References

For a complete list of references, visit https://bioxcell.com/catalogsearch/result?q=SIM0008#tab_references or scan the QR code below.



Binding Validation

Validation data shown below confirms that this clone binds to its target antigen. For lot specific binding validation data, e-mail technicalservice@bioxcell.com.



Bio X Cell, LLC

<https://bioxcell.com>

+1-866-787-3444

customerservice@bioxcell.com

Conditions: For research use only. Not for human use. Not for use in diagnostic or therapeutic procedures.

Not for resale.

Bio X Cell, Bio X Cell logo, and all other trademarks are the property of Bio X Cell, LLC © 2024 Bio X Cell, LLC