

Technical Data Sheet

FlowMAb PE human IgG2 isotype control, anti-hen egg lysozyme



Attention: Use of this product constitutes an agreement to Bio X Cell's Terms and Conditions which are included with this product in print and can also be found at <https://bioxcell.com/terms-and-conditions>.

Lot Specific Information

Lot Number: Lot Specific*
Volume: Lot Specific*
Concentration: Lot Specific* (generally 4 to 11 mg/ml) *
Total Protein: Lot Specific*

*This information will be noted on the certificate of analysis that ships with this product.

Product Information

Catalog Number: FMC180-PE
Clone: N/A
Isotype: Human IgG2, κ
Conjugation: PE
Excitation Source: Yellow-Green 488 nm, 532 nm, 561 nm
Excitation Max: 496 nm, 566 nm
Emission Max: 576 nm
Formulation: PBS, pH 7.0
Contains 0.09% Sodium Azide
Production: Purified from CHO cell supernatant in an animal-free facility
Purification: Protein A
RRID:

Description

This human IgG2, κ isotype control antibody reacts with hen egg lysozyme (HEL) and has low or no specific binding to any human sample. This recombinant human IgG2, κ antibody is produced using CHO cells as an expression system. This R-phycoerythrin (R-PE or PE)-conjugated version of the human IgG2, κ antibody serves as an isotype control with human IgG2, κ antibodies for several immunoassays, including flow cytometry, immunofluorescence, immunohistochemistry (frozen), and immunohistochemistry (paraffin).

Storage

Store at the stock concentration at 4°C and protected from prolonged exposure to light . **Do not freeze.**

Protocol Information

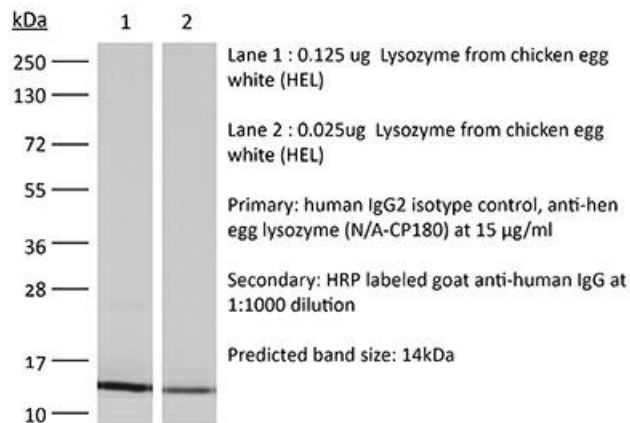
It is recommended that the reagent be carefully titrated for optimal performance in the assay of interest.

Application References

For a complete list of references, visit https://bioxcell.com/fmc180-pe?bxcs=9k1b3a#tab_references or scan the QR code below.

Binding Validation

Validation data shown below confirms that this clone binds to its target antigen. For lot specific binding validation data, e-mail technicalservice@bioxcell.com.



Bio X Cell, LLC
<https://bioxcell.com>
+1-866-787-3444
customerservice@bioxcell.com

Conditions: For research use only. Not for use in diagnostic or therapeutic procedures.

Not for resale.

Bio X Cell, Bio X Cell logo, and all other trademarks are the property of Bio X Cell, LLC © 2025 Bio X Cell, LLC