

# Technical Data Sheet

FlowMAb APC mouse IgG1 isotype control, unknown specificity



**Attention:** Use of this product constitutes an agreement to Bio X Cell's Terms and Conditions which are included with this product in print and can also be found at <https://bioxcell.com/terms-and-conditions>.

## Lot Specific Information

Lot Number: Lot Specific\*  
Volume: Lot Specific\*  
Concentration: Lot Specific\* (generally 4 to 11 mg/ml)\*  
Total Protein: Lot Specific\*

\*This information will be noted on the certificate of analysis that ships with this product.

## Product Information

Catalog Number: FM0083-APC  
Clone: MOPC-21  
Isotype: Mouse IgG1, κ  
Conjugation: APC  
Excitation Source: Red 627-640 nm  
Excitation Max: 651 nm  
Emission Max: 660 nm  
Formulation: PBS, pH 6.5  
Contains 0.09% Sodium Azide  
Production: Purified from cell culture supernatant in an animal-free facility  
Purification: Protein G  
RRID: [AB\\_1107784](https://abnova.com/AB_1107784)

## Description

The MOPC-21 monoclonal antibody (IgG1, kappa) is ideal for use as a non-reactive isotype-matched control for mouse IgG1, κ antibodies in immunoassays and other applications of antibodies. The MOPC-21 antibody is produced by a mineral oil-induced plasmacytoma cell line. The MOPC-21 antibody was selected after screening on a variety of activated, resting, live, and fixed tissues from several species (mouse, rat, human, and non-human primates), and this antibody has unknown specificity. This allophycocyanin (APC)-conjugated version of the MOPC-21 antibody is useful as an isotype control with mouse IgG1, κ antibodies for several immunoassays, including flow cytometry, immunofluorescence, immunohistochemistry (frozen), and immunohistochemistry (paraffin) applications.

## Storage

Store at the stock concentration at 4°C and protected from prolonged exposure to light. **Do not freeze.**

## Protocol Information

It is recommended that the reagent be carefully titrated for optimal performance in the assay of interest.

## Application References

For a complete list of references, visit [https://bioxcell.com/fm0083-apc?bxcs=9k1b3a#tab\\_references](https://bioxcell.com/fm0083-apc?bxcs=9k1b3a#tab_references) or scan the QR code below.



Bio X Cell, LLC

<https://bioxcell.com>  
+1-866-787-3444  
[customerservice@bioxcell.com](mailto:customerservice@bioxcell.com)

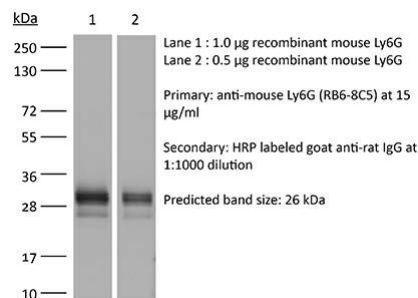
Conditions: For research use only. Not for use in diagnostic or therapeutic procedures.  
Not for resale.

Bio X Cell, Bio X Cell logo, and all other trademarks are the property  
of Bio X Cell, LLC © 2025 Bio X Cell, LLC

F5mZmZmZmZn5B/sf6pmZmZmZmZl/sP+hnpmZmZmZmfkH+xqmZmZmZmZmX+w/6GemZmZmZmZ+Qf7H+qZ+fibr2MCAAAytkH+VXcalhtcAAAABEINAAAAGVADAABAINQAAAQCDUAAAAEQg  
style="width: 150px;" class="img-fluid" />

## Binding Validation

Validation data shown below confirms that this clone binds to its target antigen. For lot specific binding validation data, e-mail [technicalservice@bioxcell.com](mailto:technicalservice@bioxcell.com).



Bio X Cell, LLC

<https://bioxcell.com>  
+1-866-787-3444  
[customerservice@bioxcell.com](mailto:customerservice@bioxcell.com)

Conditions: For research use only. Not for use in diagnostic or therapeutic procedures.  
Not for resale.

Bio X Cell, Bio X Cell logo, and all other trademarks are the property  
of Bio X Cell, LLC © 2025 Bio X Cell, LLC