

Technical Data Sheet

FlowMAb PE anti-mouse Ly6G/Ly6C (Gr-1)



Attention: Use of this product constitutes an agreement to Bio X Cell's Terms and Conditions which are included with this product in print and can also be found at <https://bioxcell.com/terms-and-conditions>.

Lot Specific Information

Lot Number: Lot Specific*
Volume: Lot Specific*
Concentration: Lot Specific* (generally 4 to 11 mg/ml) *
Total Protein: Lot Specific*

*This information will be noted on the certificate of analysis that ships with this product.

Product Information

Catalog Number: FM0075-PE
Clone: RB6-8C5
Isotype: Rat IgG2b, κ
Conjugation: PE
Excitation Source: Yellow-Green 488 nm, 532 nm, 561 nm
Excitation Max: 496 nm, 566 nm
Emission Max: 576 nm
Immunogen: Mouse granulocytes
Reported Applications: Flow cytometry Immunohistochemistry (paraffin) Immunohistochemistry (frozen)
Formulation: PBS, pH 7.0
Contains 0.09% Sodium Azide
Production: Purified from cell culture supernatant in an animal-free facility
Purification: Protein G
RRID: [AB_10312146](https://abnova.com/AB_10312146)

Description

The RB6-8C5 monoclonal antibody reacts strongly with mouse Ly6G and weakly with mouse Ly6C, previously referred to as GR-1. Ly6G is a 21-25 kDa member of the Ly-6 superfamily of GPI-anchored cell surface proteins with a role in cell signaling and cell adhesion. Ly6G is expressed differentially during development by cells in the myeloid lineage, including monocytes, macrophages, granulocytes, and neutrophils. Monocytes typically express Ly6G transiently during development, while mature granulocytes and peripheral neutrophils retain expression, making Ly6G a good cell surface marker for these populations. Studies have shown that the RB6-8C5 antibody inhibits the binding of the 1A8 antibody, which specifically reacts with mouse Ly6G but not Ly6C. This R-phycoerythrin (R-PE or PE)-conjugated version of the RB6-8C5 antibody is useful for flow cytometry, immunofluorescence, immunohistochemistry (frozen), and immunohistochemistry (paraffin) applications.

Storage

Store at the stock concentration at 4°C and protected from prolonged exposure to light . **Do not freeze.**

Protocol Information

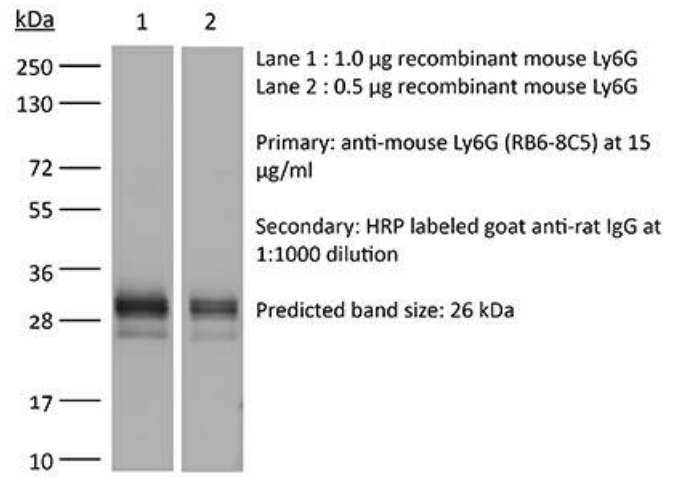
It is recommended that the reagent be carefully titrated for optimal performance in the assay of interest.

Application References

For a complete list of references, visit https://bioxcell.com/fm0075-pe?bxcs=9k1b3a#tab_references or scan the QR code below.

Binding Validation

Validation data shown below confirms that this clone binds to its target antigen. For lot specific binding validation data, e-mail technicalservice@bioxcell.com.



Bio X Cell, LLC

<https://bioxcell.com>

+1-866-787-3444

customerservice@bioxcell.com

Conditions: For research use only. Not for use in diagnostic or therapeutic procedures.

Not for resale.

Bio X Cell, Bio X Cell logo, and all other trademarks are the property of Bio X Cell, LLC © 2025 Bio X Cell, LLC