

# Technical Data Sheet

## FlowMAb PE anti-mouse Ly6G



**Attention:** Use of this product constitutes an agreement to Bio X Cell's Terms and Conditions which are included with this product in print and can also be found at <https://bioxcell.com/terms-and-conditions>.

### Lot Specific Information

**Lot Number:** Lot Specific\*  
**Volume:** Lot Specific\*  
**Concentration:** Lot Specific\* (generally 4 to 11 mg/ml) \*  
**Total Protein:** Lot Specific\*

\*This information will be noted on the certificate of analysis that ships with this product.

### Product Information

**Catalog Number:** FM0075-1-PE  
**Clone:** 1A8  
**Isotype:** Rat IgG2a,  $\kappa$   
**Conjugation:** PE  
**Excitation Source:** Yellow-Green 488 nm, 532 nm, 561 nm  
**Excitation Max:** 496 nm, 566 nm  
**Emission Max:** 576 nm  
**Immunogen:** EL4J cells transfected with Ly6G  
**Reported Applications:** Immunofluorescence Immunohistochemistry (paraffin) Immunohistochemistry (frozen) Flow cytometry  
**Formulation:** PBS, pH 7.0  
Contains 0.09% Sodium Azide  
**Purification:** Protein G  
**RRID:** [AB\\_1107721](https://abnova.com/AB_1107721)

### Description

The 1A8 monoclonal antibody reacts with mouse Ly6G. Ly6G is a 21-25 kDa member of the Ly-6 superfamily of GPI-anchored cell surface proteins, and it is involved in cell signaling and cell adhesion. Ly6G is expressed differentially during development by cells in the myeloid lineage, including monocytes, macrophages, granulocytes, and neutrophils. Monocytes typically express Ly6G transiently during development, while mature granulocytes and peripheral neutrophils retain expression, making Ly6G a good cell surface marker for these populations. Unlike the RB6-8C5 antibody, the 1A8 antibody reacts specifically with mouse Ly6G with no reported cross-reactivity with Ly6C. The RB6-8C5 antibody blocks the binding of 1A8 to Ly-6G, and these antibodies cannot be used for co-staining. This R-phycoerythrin (R-PE or PE)-conjugated version of the 1A8 antibody is useful for flow cytometry, immunofluorescence, immunohistochemistry (frozen), and immunohistochemistry (paraffin) applications.

### Storage

Store at the stock concentration at 4°C and protected from prolonged exposure to light. **Do not freeze.**

### Protocol Information

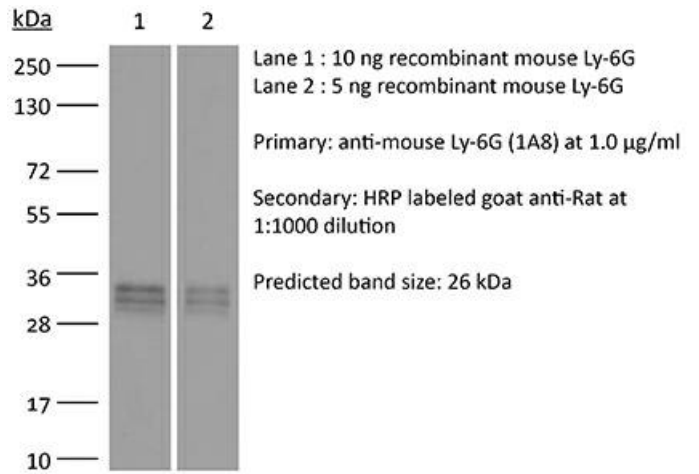
It is recommended that the reagent be carefully titrated for optimal performance in the assay of interest.

### Application References

For a complete list of references, visit [https://bioxcell.com/fm0075-1-pe?bxcs=9k1b3a#tab\\_references](https://bioxcell.com/fm0075-1-pe?bxcs=9k1b3a#tab_references) or scan the QR code below.

### Binding Validation

Validation data shown below confirms that this clone binds to its target antigen. For lot specific binding validation data, e-mail [technicalservice@bioxcell.com](mailto:technicalservice@bioxcell.com).



**Bio X Cell, LLC**

<https://bioxcell.com>

+1-866-787-3444

[customerservice@bioxcell.com](mailto:customerservice@bioxcell.com)

*Conditions: For research use only. Not for use in diagnostic or therapeutic procedures.*

*Not for resale.*

**Bio X Cell, Bio X Cell logo, and all other trademarks are the property of Bio X Cell, LLC © 2025 Bio X Cell, LLC**