

Technical Data Sheet

FlowMAb APC anti-mouse Ly6G



Attention: Use of this product constitutes an agreement to Bio X Cell's Terms and Conditions which are included with this product in print and can also be found at <https://bioxcell.com/terms-and-conditions>.

Lot Specific Information

Lot Number: Lot Specific*
Volume: Lot Specific*
Concentration: Lot Specific* (generally 4 to 11 mg/ml) *
Total Protein: Lot Specific*

*This information will be noted on the certificate of analysis that ships with this product.

Product Information

Catalog Number: FM0075-1-APC
Clone: 1A8
Isotype: Rat IgG2a, κ
Conjugation: APC
Excitation Source: Red 627-640 nm
Excitation Max: 651 nm
Emission Max: 660 nm
Immunogen: EL4J cells transfected with Ly6G
Reported Applications: Immunofluorescence Immunohistochemistry (paraffin) Immunohistochemistry (frozen) Flow cytometry
Formulation: PBS, pH 7.0
Contains 0.09% Sodium Azide
Purification: Protein G
RRID: [AB_1107721](https://abnova.com/AB_1107721)

Description

The 1A8 monoclonal antibody reacts with mouse Ly6G. Ly6G is a 21-25 kDa member of the Ly-6 superfamily of GPI-anchored cell surface proteins, and it is involved in cell signaling and cell adhesion. Ly6G is expressed differentially during development by cells in the myeloid lineage, including monocytes, macrophages, granulocytes, and neutrophils. Monocytes typically express Ly6G transiently during development, while mature granulocytes and peripheral neutrophils retain expression, making Ly6G a good cell surface marker for these populations. Unlike the RB6-8C5 antibody, the 1A8 antibody reacts specifically with mouse Ly6G with no reported cross-reactivity with Ly6C. The RB6-8C5 antibody blocks the binding of 1A8 to Ly-6G, and these antibodies cannot be used for co-staining. This allophycocyanin (APC)-conjugated version of the 1A8 antibody is useful for flow cytometry, immunofluorescence, immunohistochemistry (frozen), and immunohistochemistry (paraffin) applications.

Storage

Store at the stock concentration at 4°C and protected from prolonged exposure to light. **Do not freeze.**

Protocol Information

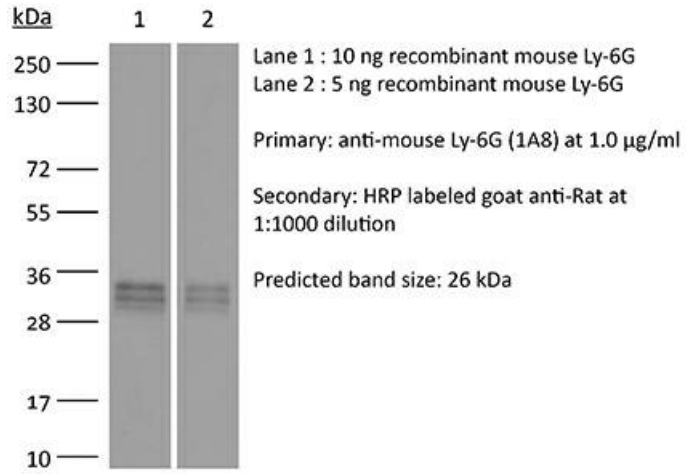
It is recommended that the reagent be carefully titrated for optimal performance in the assay of interest.

Application References

For a complete list of references, visit https://bioxcell.com/fm0075-1-apc?bxcs=9k1b3a#tab_references or scan the QR code below.

Binding Validation

Validation data shown below confirms that this clone binds to its target antigen. For lot specific binding validation data, e-mail technicalservice@bioxcell.com.



Bio X Cell, LLC

<https://bioxcell.com>

+1-866-787-3444

customerservice@bioxcell.com

Conditions: For research use only. Not for use in diagnostic or therapeutic procedures.

Not for resale.

Bio X Cell, Bio X Cell logo, and all other trademarks are the property of Bio X Cell, LLC © 2025 Bio X Cell, LLC