

# Technical Data Sheet

RecombiMAb mouse IgG2a isotype control, anti-hen egg lysozyme



**Attention:** Use of this product constitutes an agreement to Bio X Cell's Terms and Conditions which are included with this product in print and can also be found at <https://bioxcell.com/terms-and-conditions>.

## Lot Specific Information

**Lot Number:** Lot Specific\*  
**Volume:** Lot Specific\*  
**Concentration:** Lot Specific\* (generally 4 to 11 mg/ml) \*  
**Total Protein:** Lot Specific\*

\*This information will be noted on the certificate of analysis that ships with this product.

## Product Information

**Catalog Number:** CP190  
**Clone:** N/A  
**Isotype:** Mouse IgG2a,  $\kappa$   
**Recommended Dilution Buffer:** InVivoPure pH 7.0 Dilution Buffer  
**Immunogen:** Hen egg lysozyme (HEL)  
**Formulation:** PBS, pH 7.0  
Contains no stabilizers or preservatives  
**Endotoxin:** <1EU/mg (<0.001EU/ $\mu$ g)  
Determined by LAL gel clotting assay  
**Purity:** >95%  
Determined by SDS-PAGE  
**Sterility:** 0.2  $\mu$ m filtration  
**Production:** Purified from CHO cell supernatant in an animal-free facility  
**Aggregation:** <5%  
Determined by SEC  
**RRID:**  
**Molecular Weight:** 150 kDa

## Murine Pathogen Test Results

Mouse Norovirus: Negative, Mouse Parvovirus: Negative, Mouse Minute Virus: Negative, Mouse Hepatitis Virus: Negative, Reovirus Screen: Negative, Lymphocytic Choriomeningitis virus: Negative, Lactate Dehydrogenase-Elevating Virus: Negative, Mouse Rotavirus: Negative, Theiler's Murine Encephalomyelitis: Negative, Ectromelia/Mousepox Virus: Negative, Hantavirus: Negative, Polyoma Virus: Negative, Mouse Adenovirus: Negative, Sendai Virus: Negative, Mycoplasma Pulmonis: Negative, Pneumonia Virus of Mice: Negative, Mouse Cytomegalovirus: Negative, K Virus: Negative

## Description

This mouse IgG2a isotype control antibody reacts with hen egg lysozyme and has low or no specific binding to any mouse sample.

## Storage

Store at the stock concentration at 4°C . **Do not freeze.**

It is not uncommon for a floccule or precipitate to appear during storage. The floccule is typically buffer salts precipitating out of solution or a small bit of protein aggregation. For information on how to remove floccules or precipitates see our FAQ's at <https://bioxcell.com/faqs>.

## Protocol Information

Since applications vary, each investigator should use the application references as a guide to help estimate the appropriate

dose or concentration. The dose or concentration can be further optimized experimentally in a dose response or titration experiment.

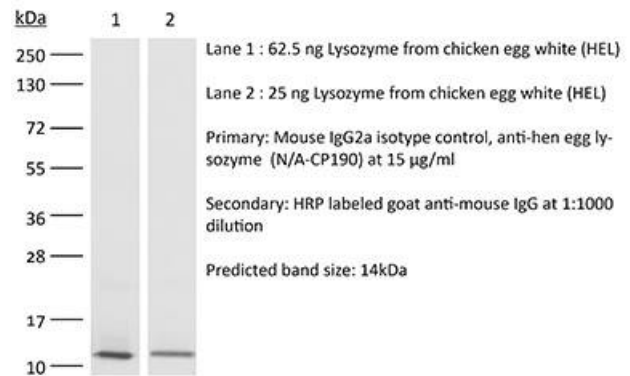
## Application References

For a complete list of references, visit [https://bioxcell.com/cp190?bxcs=9k1b3a#tab\\_references](https://bioxcell.com/cp190?bxcs=9k1b3a#tab_references) or scan the QR code below.



## Binding Validation

Validation data shown below confirms that this clone binds to its target antigen. For lot specific binding validation data, e-mail [technicalservice@bioxcell.com](mailto:technicalservice@bioxcell.com).



**Bio X Cell, LLC**  
<https://bioxcell.com>  
+1-866-787-3444  
[customerservice@bioxcell.com](mailto:customerservice@bioxcell.com)

*Conditions: For research use only. Not for use in diagnostic or therapeutic procedures.*

*Not for resale.*

**Bio X Cell, Bio X Cell logo, and all other trademarks are the property of Bio X Cell, LLC © 2024 Bio X Cell, LLC**