

# Technical Data Sheet

## RecombiMAb human IgG4 (S228P) isotype control, anti-hen egg lysozyme



**Attention:** Use of this product constitutes an agreement to Bio X Cell's Terms and Conditions which are included with this product in print and can also be found at <https://bioxcell.com/terms-and-conditions>.

### Lot Specific Information

Lot Number: Lot Specific\*  
Volume: Lot Specific\*  
Concentration: Lot Specific\* (generally 4 to 11 mg/ml) \*  
Total Protein: Lot Specific\*

\*This information will be noted on the certificate of analysis that ships with this product.

### Product Information

Catalog Number: CP181  
Clone: N/A  
Isotype: Human IgG4,  $\lambda$   
Recommended Dilution Buffer: InVivoPure pH 7.0 Dilution Buffer  
Mutations: S228P  
Immunogen: Hen egg lysozyme (HEL)  
Formulation: PBS, pH 7.0  
Contains no stabilizers or preservatives  
Endotoxin: <1EU/mg (<0.001EU/ $\mu$ g)  
Determined by LAL gel clotting assay  
Purity: >95%  
Determined by SDS-PAGE  
Sterility: 0.2  $\mu$ m filtration  
Production: Purified from CHO cell supernatant in an animal-free facility  
Purification: Protein A  
Aggregation: <5%  
Determined by SEC  
RRID:  
Molecular Weight: 150 kDa

### Murine Pathogen Test Results

Mouse Norovirus: Negative, Mouse Parvovirus: Negative, Mouse Minute Virus: Negative, Mouse Hepatitis Virus: Negative, Reovirus Screen: Negative, Lymphocytic Choriomeningitis virus: Negative, Lactate Dehydrogenase-Elevating Virus: Negative, Mouse Rotavirus: Negative, Theiler's Murine Encephalomyelitis: Negative, Ectromelia/Mousepox Virus: Negative, Hantavirus: Negative, Polyoma Virus: Negative, Mouse Adenovirus: Negative, Sendai Virus: Negative, Mycoplasma Pulmonis: Negative, Pneumonia Virus of Mice: Negative, Mouse Cytomegalovirus: Negative, K Virus: Negative

### Description

This human IgG4 S228P isotype control antibody reacts with hen egg lysozyme and has low or no specific binding to any human sample. The S228P mutation is included to prevent IgG4 Fab exchange. This is a recombinant human IgG4 antibody produced in CHO cells. This human IgG4 isotype control antibody differs from CP147 in that CP147 has a kappa light chain and CP181 has a lambda light chain.

### Storage

Store at the stock concentration at 4°C. **Do not freeze.**

It is not uncommon for a floccule or precipitate to appear during storage. The floccule is typically buffer salts precipitating out of solution or a small bit of protein aggregation. For information on how to remove floccules or precipitates see our FAQ's at

<https://bioxcell.com/faqs>.

## Protocol Information

Since applications vary, each investigator should use the application references as a guide to help estimate the appropriate dose or concentration. The dose or concentration can be further optimized experimentally in a dose response or titration experiment.

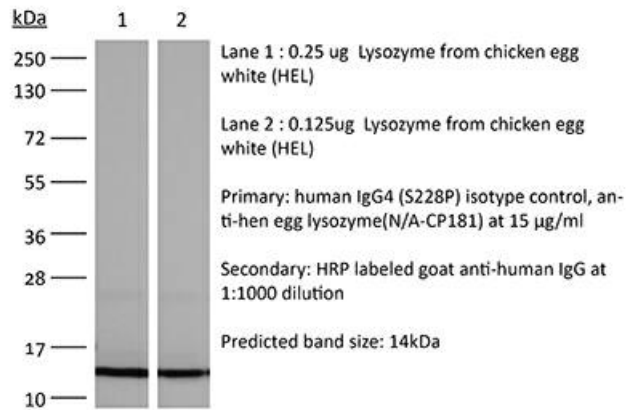
## Application References

For a complete list of references, visit [https://bioxcell.com/cp181?bxcs=9k1b3a#tab\\_references](https://bioxcell.com/cp181?bxcs=9k1b3a#tab_references) or scan the QR code below.



## Binding Validation

Validation data shown below confirms that this clone binds to its target antigen. For lot specific binding validation data, e-mail [technicalservice@bioxcell.com](mailto:technicalservice@bioxcell.com).



**Bio X Cell, LLC**  
<https://bioxcell.com>  
+1-866-787-3444  
[customerservice@bioxcell.com](mailto:customerservice@bioxcell.com)

*Conditions: For research use only. Not for use in diagnostic or therapeutic procedures.*

*Not for resale.*

**Bio X Cell, Bio X Cell logo, and all other trademarks are the property of Bio X Cell, LLC © 2024 Bio X Cell, LLC**