

Technical Data Sheet

RecombiMAb anti-mouse PD-L1 (B7-H1)



Attention: Use of this product constitutes an agreement to Bio X Cell's Terms and Conditions which are included with this product in print and can also be found at <https://bioxcell.com/terms-and-conditions>.

Lot Specific Information

Lot Number: Lot Specific*
Volume: Lot Specific*
Concentration: Lot Specific* (generally 4 to 11 mg/ml) *
Total Protein: Lot Specific*

*This information will be noted on the certificate of analysis that ships with this product.

Product Information

Catalog Number: CP158
Clone: 10F.9G2™-CP158
Isotype: Mouse IgG2a, κ
Recommended Isotype Control(s): InVivoPlus mouse IgG2a isotype control, unknown specificity
Recommended Dilution Buffer: InVivoPure pH 7.0 Dilution Buffer
Immunogen: Mouse CD274
Reported Applications: *in vivo* PD-L1 blockade*
Immunofluorescence*
Immunohistochemistry (frozen)*
Flow cytometry*
Western blot*
*Reported for the original rat IgG2a RMP1-14 antibody

Formulation: PBS, pH 7.0
Contains no stabilizers or preservatives

Endotoxin: <1EU/mg (<0.001EU/μg)
Determined by LAL gel clotting assay

Purity: >95%
Determined by SDS-PAGE

Sterility: 0.2 μm filtration

Production: Purified from CHO cell supernatant in an animal-free facility

Purification: Protein A

Aggregation: <5%
Determined by SEC

Molecular Weight: 150 kDa

Murine Pathogen Test Results

Mouse Norovirus: Negative, Mouse Parvovirus: Negative, Mouse Minute Virus: Negative, Mouse Hepatitis Virus: Negative, Reovirus Screen: Negative, Lymphocytic Choriomeningitis virus: Negative, Lactate Dehydrogenase-Elevating Virus: Negative, Mouse Rotavirus: Negative, Theiler's Murine Encephalomyelitis: Negative, Ectromelia/Mousepox Virus: Negative, Hantavirus: Negative, Polyoma Virus: Negative, Mouse Adenovirus: Negative, Sendai Virus: Negative, Mycoplasma Pulmonis: Negative, Pneumonia Virus of Mice: Negative, Mouse Cytomegalovirus: Negative, K Virus: Negative

Description

The 10F.9G2™-CP158 monoclonal antibody is a recombinant chimeric version of the original 10F.9G2™ antibody. The variable domain sequences are identical to the original 10F.9G2™ but the constant region sequences have been switched from rat IgG2b to mouse IgG2a. The 10F.9G2™-CP158 antibody contains no Fc mutations just as the original rat IgG2b

antibody does not. The 10F.9G2™-CP158 antibody reacts with mouse PD-L1 (programmed death ligand 1) also known as B7-H1 or CD274. PD-L1 is a 40 kDa type I transmembrane protein that belongs to the B7 family of the Ig superfamily. PD-L1 is expressed on T lymphocytes, B lymphocytes, NK cells, dendritic cells, as well as IFN γ stimulated monocytes, epithelial cells and endothelial cells. PD-L1 binds to its receptor, PD-1, found on CD4 and CD8 thymocytes as well as activated T and B lymphocytes and myeloid cells. Engagement of PD-L1 with PD-1 leads to inhibition of TCR-mediated T cell proliferation and cytokine production. PD-L1 is thought to play an important role in tumor immune evasion. Induced PD-L1 expression is common in many tumors and results in increased resistance of tumor cells to CD8 T cell mediated lysis. In mouse models of melanoma, tumor growth can be transiently arrested via treatment with antibodies which block the interaction between PD-L1 and PD-1. The 10F.9G2™ antibody has been shown to block the interaction between PD-L1 and PD-1 and between PD-L1 and B7-1 (CD80).

Storage

Store at the stock concentration at 4°C. **Do not freeze.**

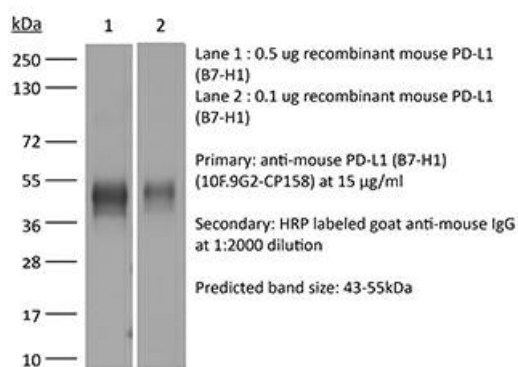
It is not uncommon for a floccule or precipitate to appear during storage. The floccule is typically buffer salts precipitating out of solution or a small bit of protein aggregation. For information on how to remove floccules or precipitates see our FAQ's at <https://bioxcell.com/faqs>.

Protocol Information

Since applications vary, each investigator should use the application references as a guide to help estimate the appropriate dose or concentration. The dose or concentration can be further optimized experimentally in a dose response or titration experiment.

Binding Validation

Validation data shown below confirms that this clone binds to its target antigen. For lot specific binding validation data, e-mail technicalservice@bioxcell.com.



Bio X Cell, LLC

<https://bioxcell.com>

+1-866-787-3444

customerservice@bioxcell.com

Conditions: For research use only. Not for use in diagnostic or therapeutic procedures.

Not for resale.

Bio X Cell, Bio X Cell logo, and all other trademarks are the property of Bio X Cell, LLC © 2024 Bio X Cell, LLC