

Technical Data Sheet

RecombiMAb anti-mouse CD28 (LALA-PG)



bioxcell.com

Attention: Use of this product constitutes an agreement to Bio X Cell's Terms and Conditions which are included with this product in print and can also be found at <https://bioxcell.com/terms-and-conditions>.

Lot Specific Information

Lot Number: Lot Specific*
Volume: Lot Specific*
Concentration: Lot Specific* (generally 4 to 11 mg/ml) *
Total Protein: Lot Specific*

*This information will be noted on the certificate of analysis that ships with this product.

Product Website Link: <https://bioxcell.com/recombimab-anti-mouse-cd28-lala-pg-cp043>

Product Information

Catalog Number: CP043
Clone: D665-CP043
Isotype: Mouse IgG2a, κ
Recommended Isotype Control(s): RecombiMAb mouse IgG2a (LALA-PG) isotype control, anti-hen egg lysozyme
Recommended Dilution Buffer: InVivoPure pH 7.0 Dilution Buffer
Mutations: LALA-PG
Immunogen: A20 cells expressing mouse CD28 and a recombinant mouse CD28-Ig fusion protein
Reported Applications: *in vivo* T cell stimulation/activation*
in vitro T cell stimulation/activation*
*Reported for the original mouse IgG1 D665 antibody
Formulation: PBS, pH 7.0
Contains no stabilizers or preservatives
Endotoxin: ≤ 0.5 EU/mg (≤ 0.0005 EU/ μ g)
Determined by LAL assay
Purity: $\geq 95\%$
Determined by SDS-PAGE
Sterility: 0.2 μ m filtration
Production: Purified from HEK293 cell supernatant in an animal-free facility
Purification: Protein G
Aggregation: $< 5\%$
Determined by SEC
RRID:
Molecular Weight: 150 kDa

Murine Pathogen Test Results

Mouse Norovirus: Negative, Mouse Parvovirus: Negative, Mouse Minute Virus: Negative, Mouse Hepatitis Virus: Negative, Reovirus Screen: Negative, Lymphocytic Choriomeningitis virus: Negative, Lactate Dehydrogenase-Elevating Virus: Negative, Mouse Rotavirus: Negative, Theiler's Murine Encephalomyelitis: Negative, Ectromelia/Mousepox Virus: Negative, Hantavirus: Negative, Polyoma Virus: Negative, Mouse Adenovirus: Negative, Sendai Virus: Negative, Mycoplasma Pulmonis: Negative, Pneumonia Virus of Mice: Negative, Mouse Cytomegalovirus: Negative, K Virus: Negative

Description

The D665-CP043 monoclonal antibody is a chimeric version of the original D665 antibody. The variable domain sequences are identical to the original D665 but the constant region sequences have been switched from mouse IgG1 to mouse IgG2a. The D665-CP043 antibody also contains a LALA-PG mutation in the Fc fragment rendering it unable to bind to endogenous

Fcγ receptors. The D665-CP043 monoclonal antibody reacts with mouse CD28, a 45 kDa costimulatory receptor and a member of the Ig superfamily. CD28 is expressed by thymocytes, most peripheral T cells, and NK cells. CD28 is a receptor for CD80 (B7-1) and CD86 (B7-2). Signaling through CD28 induces IL-2 and IL-2 receptor expression and T cell proliferation. The D665 antibody is a CD28 superagonist and is most commonly used to induce the expansion of Treg cells in vivo in various mouse models of disease.

Storage

Store at the stock concentration at 4°C . **Do not freeze.**

It is not uncommon for a floccule or precipitate to appear during storage. The floccule is typically buffer salts precipitating out of solution or a small bit of protein aggregation. For information on how to remove floccules or precipitates see our FAQ's at <https://bioxcell.com/faqs>.

Protocol Information

Since applications vary, each investigator should use the application references as a guide to help estimate the appropriate dose or concentration. The dose or concentration can be further optimized experimentally in a dose response or titration experiment.

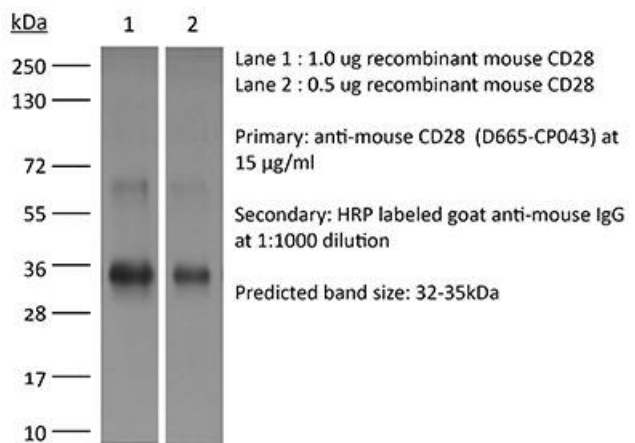
Application References

For a complete list of references, visit https://bioxcell.com/recombimab-anti-mouse-cd28-lala-pg-cp043?utm_source=cr9k1b#tab_references or scan the QR code below.



Binding Validation

Validation data shown below confirms that this clone binds to its target antigen. For lot specific binding validation data, e-mail technicalservice@bioxcell.com.



Bio X Cell, LLC
<https://bioxcell.com>
+1-866-787-3444
customerservice@bioxcell.com

Conditions: For research use only. Not for use in diagnostic or therapeutic procedures.

Not for resale.

Bio X Cell, Bio X Cell logo, and all other trademarks are the property of Bio X Cell, LLC © Bio X Cell, LLC