

Technical Data Sheet

InVivoPlus anti-mouse CD20



Attention: Use of this product constitutes an agreement to Bio X Cell's Terms and Conditions which are included with this product in print and can also be found at <https://bioxcell.com/terms-and-conditions>.

Lot Specific Information

Lot Number: Lot Specific*
Volume: Lot Specific*
Concentration: Lot Specific* (generally 4 to 11 mg/ml) *
Total Protein: Lot Specific*

*This information will be noted on the certificate of analysis that ships with this product.

Product Information

Catalog Number: BP0356
Clone: MB20-11
Isotype: Mouse IgG2c, κ
Recommended Isotype Control(s): InVivoPlus mouse IgG2c isotype control, anti-dengue virus
Recommended Dilution Buffer: InVivoPure pH 7.0 Dilution Buffer
Immunogen: Mouse CD20-GFP transfected 300.19 cells
Reported Applications: *in vivo* B cell depletion
Western blot
Formulation: PBS, pH 7.0
Contains no stabilizers or preservatives
Endotoxin: <1EU/mg (<0.001EU/ μ g)
Determined by LAL gel clotting assay
Purity: >95%
Determined by SDS-PAGE
Sterility: 0.2 μ m filtration
Production: Purified from cell culture supernatant in an animal-free facility
Purification: Protein A
Aggregation: <5%
Determined by SEC
RRID: [AB_2894775](https://abnova.com/AB_2894775)
Molecular Weight: 150 kDa

Murine Pathogen Test Results

Mouse Norovirus: Negative, Mouse Parvovirus: Negative, Mouse Minute Virus: Negative, Mouse Hepatitis Virus: Negative, Reovirus Screen: Negative, Lymphocytic Choriomeningitis virus: Negative, Lactate Dehydrogenase-Elevating Virus: Negative, Mouse Rotavirus: Negative, Theiler's Murine Encephalomyelitis: Negative, Ectromelia/Mousepox Virus: Negative, Hantavirus: Negative, Polyoma Virus: Negative, Mouse Adenovirus: Negative, Sendai Virus: Negative, Mycoplasma Pulmonis: Negative, Pneumonia Virus of Mice: Negative, Mouse Cytomegalovirus: Negative, K Virus: Negative

Description

The MB20-11 monoclonal antibody reacts with mouse CD20. CD20 is a B cell-specific 33-37 kDa transmembrane protein which is also known as B-lymphocyte antigen, B1, and Bp35. CD20 plays roles in intracellular calcium regulation and B cell activation and is critical for an optimal B cell immune response against T-independent antigens. CD20 is first expressed after the induction of CD19 together with IgM during the pre-B to immature B cell transition in the bone marrow. It's expression then increases during maturation with almost all mature B cells expressing some level of CD20. However, CD20 is not expressed by plasma blasts or plasma cells. CD20 is expressed by most B cell neoplasms and is useful in diagnosing

B cell lymphomas and leukemia. Many anti-CD20 monoclonal antibodies are currently being used to successfully treat leukemia, lymphomas, and various autoimmune diseases. A single injection of the MB20-11 antibody has been reported to deplete circulating B cells in mice within 1 hour of treatment, with a durable effect for 57 days before B cells begin to repopulate in the blood and spleen.

Storage

Store at the stock concentration at 4°C. **Do not freeze.**

It is not uncommon for a floccule or precipitate to appear during storage. The floccule is typically buffer salts precipitating out of solution or a small bit of protein aggregation. For information on how to remove floccules or precipitates see our FAQ's at <https://bioxcell.com/faqs>.

Protocol Information

Since applications vary, each investigator should use the application references as a guide to help estimate the appropriate dose or concentration. The dose or concentration can be further optimized experimentally in a dose response or titration experiment.

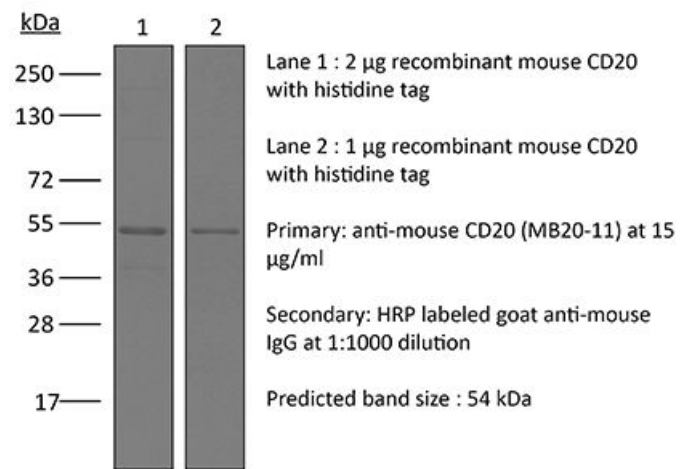
Application References

For a complete list of references, visit https://bioxcell.com/catalogsearch/result?q=BP0356#tab_references or scan the QR code below.



Binding Validation

Validation data shown below confirms that this clone binds to its target antigen. For lot specific binding validation data, e-mail technicalservice@bioxcell.com.



Bio X Cell, LLC
<https://bioxcell.com>
+1-866-787-3444
customerservice@bioxcell.com

Conditions: For research use only. Not for use in diagnostic or therapeutic procedures.

Not for resale.

Bio X Cell, Bio X Cell logo, and all other trademarks are the property of Bio X Cell, LLC © 2024 Bio X Cell, LLC