

# Technical Data Sheet

## InVivoPlus anti-mouse PD-L1 (B7-H1)



**Attention:** Use of this product constitutes an agreement to Bio X Cell's Terms and Conditions which are included with this product in print and can also be found at <https://bioxcell.com/terms-and-conditions>.

### Lot Specific Information

**Lot Number:** Lot Specific\*  
**Volume:** Lot Specific\*  
**Concentration:** Lot Specific\* (generally 4 to 11 mg/ml) \*  
**Total Protein:** Lot Specific\*

\*This information will be noted on the certificate of analysis that ships with this product.

### Product Information

**Catalog Number:** BP0101  
**Clone:** 10F.9G2™  
**Isotype:** Rat IgG2b, κ  
**Recommended Isotype Control(s):** InVivoPlus rat IgG2b isotype control, anti-keyhole limpet hemocyanin  
**Recommended Dilution Buffer:** InVivoPure pH 6.5 Dilution Buffer  
**Immunogen:** Mouse CD274  
**Reported Applications:** *in vivo* PD-L1 blockade  
Immunofluorescence  
Immunohistochemistry (frozen)  
Flow cytometry  
Western blot  
**Formulation:** PBS, pH 6.5  
Contains no stabilizers or preservatives  
**Endotoxin:** <1EU/mg (<0.001EU/μg)  
Determined by LAL gel clotting assay  
**Purity:** >95%  
Determined by SDS-PAGE  
**Sterility:** 0.2 μm filtration  
**Production:** Purified from cell culture supernatant in an animal-free facility  
**Purification:** Protein G  
**Aggregation:** <5%  
Determined by SEC  
**RRID:** [AB\\_10949073](https://www.ebi.ac.uk/rrd/AB_10949073)  
**Molecular Weight:** 150 kDa

### Murine Pathogen Test Results

Mouse Norovirus: Negative, Mouse Parvovirus: Negative, Mouse Minute Virus: Negative, Mouse Hepatitis Virus: Negative, Reovirus Screen: Negative, Lymphocytic Choriomeningitis virus: Negative, Lactate Dehydrogenase-Elevating Virus: Negative, Mouse Rotavirus: Negative, Theiler's Murine Encephalomyelitis: Negative, Ectromelia/Mousepox Virus: Negative, Hantavirus: Negative, Polyoma Virus: Negative, Mouse Adenovirus: Negative, Sendai Virus: Negative, Mycoplasma Pulmonis: Negative, Pneumonia Virus of Mice: Negative, Mouse Cytomegalovirus: Negative, K Virus: Negative

### Description

The 10F.9G2™ monoclonal antibody reacts with mouse PD-L1 (programmed death ligand 1) also known as B7-H1 or CD274. PD-L1 is a 40 kDa type I transmembrane protein that belongs to the B7 family of the Ig superfamily. PD-L1 is expressed on T lymphocytes, B lymphocytes, NK cells, dendritic cells, as well as IFNγ stimulated monocytes, epithelial cells

and endothelial cells. PD-L1 binds to its receptor, PD-1, found on CD4 and CD8 thymocytes as well as activated T and B lymphocytes and myeloid cells. Engagement of PD-L1 with PD-1 leads to inhibition of TCR-mediated T cell proliferation and cytokine production. PD-L1 is thought to play an important role in tumor immune evasion. Induced PD-L1 expression is common in many tumors and results in increased resistance of tumor cells to CD8 T cell mediated lysis. In mouse models of melanoma, tumor growth can be transiently arrested via treatment with antibodies which block the interaction between PD-L1 and PD-1. The 10F.9G2™ antibody has been shown to block the interaction between PD-L1 and PD-1 and between PD-L1 and B7-1 (CD80).

## Storage

Store at the stock concentration at 4°C. **Do not freeze.**

It is not uncommon for a floccule or precipitate to appear during storage. The floccule is typically buffer salts precipitating out of solution or a small bit of protein aggregation. For information on how to remove floccules or precipitates see our FAQ's at <https://bioxcell.com/faqs>.

## Protocol Information

Since applications vary, each investigator should use the application references as a guide to help estimate the appropriate dose or concentration. The dose or concentration can be further optimized experimentally in a dose response or titration experiment.

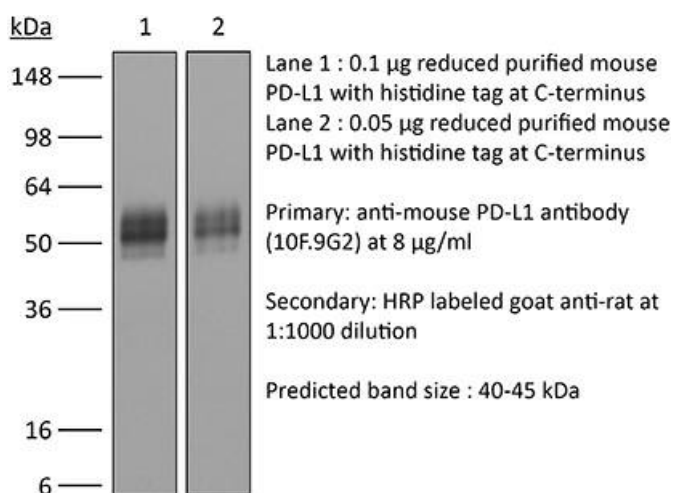
## Application References

For a complete list of references, visit [https://bioxcell.com/catalogsearch/result/?q=BP0101#tab\\_references](https://bioxcell.com/catalogsearch/result/?q=BP0101#tab_references) or scan the QR code below.



## Binding Validation

Validation data shown below confirms that this clone binds to its target antigen. For lot specific binding validation data, e-mail [technicalservice@bioxcell.com](mailto:technicalservice@bioxcell.com).



**Bio X Cell, LLC**

<https://bioxcell.com>

+1-866-787-3444

[customerservice@bioxcell.com](mailto:customerservice@bioxcell.com)

*Conditions: For research use only. Not for use in diagnostic or therapeutic procedures.*

*Not for resale.*

**Bio X Cell, Bio X Cell logo, and all other trademarks are the property of Bio X Cell, LLC © 2024 Bio X Cell, LLC**