

InVivoMAb anti-mouse CD20

Lot Specific Information

Lot Number:	Lot Specific*
Volume:	Lot Specific*
Concentration:	Lot Specific* (generally 4 to 11 mg/ml) *
Total Protein:	Lot Specific*

*This information will be noted on the certificate of analysis that ships with this product.

Product Information

Catalog Number:	BE0302
Clone:	AISB12
Isotype:	Rat IgG2a, κ
Recommended Isotype Control(s):	InVivoMAb rat IgG2a isotype control, anti-trinitrophenol
Recommended Dilution Buffer:	InVivoPure pH 7.0 Dilution Buffer
Immunogen:	Full length mouse CD20 protein
Reported Applications:	Flow cytometry Western blot
Formulation:	PBS, pH 7.0 Contains no stabilizers or preservatives
Endotoxin:	<2EU/mg (<0.002EU/μg) Determined by LAL gel clotting assay
Purity:	>95% Determined by SDS-PAGE
Sterility:	0.2 μm filtration
Production:	Purified from tissue culture supernatant in an animal free facility
Purification:	Protein G
RRID:	AB_2715460
Molecular Weight:	150 kDa

Description

The AISB12 monoclonal antibody reacts with mouse CD20. CD20 is a B cell-specific 33-37 kDa transmembrane protein which is also known as B-lymphocyte antigen, B1, and Bp35. CD20 plays roles in intracellular calcium regulation and B cell activation and is critical for an optimal B cell immune response against T-independent antigens. CD20 is first expressed after the induction of CD19 together with IgM during the pre-B to immature B cell transition in the bone marrow. Its expression then increases during maturation with almost all mature B cells expressing some level of CD20. However, CD20 is not expressed by plasma blasts or plasma cells. CD20 is expressed by most B cell neoplasms, and is useful in diagnosing B cell lymphomas and leukemia. Many anti-CD20 monoclonal antibodies are currently being used to successfully treat leukemia, lymphomas, and various autoimmune diseases.

Shelf-life and Storage

Store at the stock concentration at 4°C. **Do not freeze.**

All Bio X Cell antibodies have a guaranteed shelf-life of one year from the date of customer receipt when stored as recommended. It is not uncommon for a floccule or precipitate to appear during storage. The floccule is typically buffer salts precipitating out of solution or a small bit of protein aggregation. For information on how to remove floccules or precipitates see our FAQ's at bxcell.com/faqs.

Protocol Information

Since applications vary, each investigator should use the application references as a guide to help estimate the appropriate dose or concentration. The dose or concentration can be further optimized experimentally in a dose response or titration experiment.

Application References

For a complete list of references, visit <https://bxcell.com/product/invivomab-anti-mouse-cd20/#references> or scan the QR code below.

Bio X Cell, Inc.

bxcell.com
1.866.787.3444
customerservice@bxcell.com

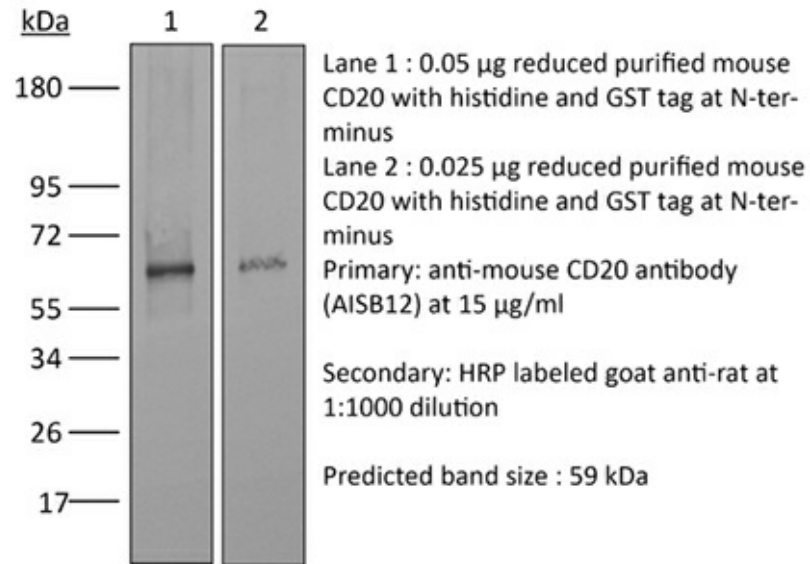
Conditions: For Research Use Only. Not for use in diagnostic or therapeutic procedures. Not for resale.

Bio X Cell, Bio X Cell Logo and all other trademarks are the property of Bio X Cell, Inc. © 2020 Bio X Cell



Binding Validation

Western blot data shown below confirms that this clone binds to its target antigen. For lot specific binding validation data, email technicalservice@bxcell.com.



Bio X Cell, Inc.

bxcell.com
1.866.787.3444

customerservice@bxcell.com

Conditions: For Research Use Only. Not for use in diagnostic or therapeutic procedures. Not for resale.

Bio X Cell, Bio X Cell Logo and all other trademarks are the property of Bio X Cell, Inc. © 2020 Bio X Cell