

# Technical Data Sheet

## InVivoMAb anti-mouse PD-1 (CD279)



**Attention:** Use of this product constitutes an agreement to Bio X Cell's Terms and Conditions which are included with this product in print and can also be found at <https://bioxcell.com/terms-and-conditions>.

### Lot Specific Information

**Lot Number:** Lot Specific\*  
**Volume:** Lot Specific\*  
**Concentration:** Lot Specific\* (generally 4 to 11 mg/ml) \*  
**Total Protein:** Lot Specific\*

\*This information will be noted on the certificate of analysis that ships with this product.

### Product Information

<b>Catalog Number:</b>	<b>BE0146</b>
<b>Clone:</b>	<b>RMP1-14</b>
<b>Isotype:</b>	Rat IgG2a, $\kappa$
<b>Recommended Isotype Control(s):</b>	InVivoMAb rat IgG2a isotype control, anti-trinitrophenol
<b>Recommended Dilution Buffer:</b>	InVivoPure pH 7.0 Dilution Buffer
<b>Immunogen:</b>	Syrian Hamster BKH cells transfected with mouse PD-1 cDNA
<b>Reported Applications:</b>	<i>in vivo</i> blocking of PD-1/PD-L signaling
<b>Formulation:</b>	PBS, pH 7.0 Contains no stabilizers or preservatives
<b>Endotoxin:</b>	<2EU/mg (<0.002EU/ $\mu$ g) Determined by LAL gel clotting assay
<b>Purity:</b>	>95% Determined by SDS-PAGE
<b>Sterility:</b>	0.2 $\mu$ m filtration
<b>Production:</b>	Purified from cell culture supernatant in an animal-free facility
<b>Purification:</b>	Protein G
<b>RRID:</b>	<a href="https://rrid.info/AB_10949053">AB_10949053</a>
<b>Molecular Weight:</b>	150 kDa

### Description

The RMP1-14 monoclonal antibody reacts with mouse PD-1 (programmed death-1) also known as CD279. PD-1 is a 50-55 kDa cell surface receptor encoded by the *Pdcd1* gene that belongs to the CD28 family of the Ig superfamily. PD-1 is transiently expressed on CD4 and CD8 thymocytes as well as activated T and B lymphocytes and myeloid cells. PD-1 expression declines after successful elimination of antigen. Additionally, *Pdcd1* mRNA is expressed in developing B lymphocytes during the pro-B-cell stage. PD-1's structure includes a ITIM (immunoreceptor tyrosine-based inhibitory motif) suggesting that PD-1 negatively regulates TCR signals. PD-1 signals via binding its two ligands, PD-L1 and PD-L2 both members of the B7 family. Upon ligand binding, PD-1 signaling inhibits T-cell activation, leading to reduced proliferation, cytokine production, and T-cell death. Additionally, PD-1 is known to play key roles in peripheral tolerance and prevention of autoimmune disease in mice as PD-1 knockout animals show dilated cardiomyopathy, splenomegaly, and loss of peripheral tolerance. Induced PD-L1 expression is common in many tumors including squamous cell carcinoma, colon adenocarcinoma, and breast adenocarcinoma. PD-L1 overexpression results in increased resistance of tumor cells to CD8 T cell mediated lysis. In mouse models of melanoma, tumor growth can be transiently arrested via treatment with antibodies which block the interaction between PD-L1 and its receptor PD-1. For these reasons anti-PD-1 mediated immunotherapies are currently being explored as cancer treatments. Like the J43 antibody the RMP1-14 antibody has been shown to block the binding of both mouse PD-L1-Ig and mouse PD-L2-Ig to PD-1.

Storage

Store at the stock concentration at 4°C. **Do not freeze.**  
It is not uncommon for a floccule or precipitate to appear during storage. The floccule is typically buffer salts precipitating out of solution or a small bit of protein aggregation. For information on how to remove floccules or precipitates see our FAQ's at <https://bioxcell.com/faqs>.

Protocol Information

Since applications vary, each investigator should use the application references as a guide to help estimate the appropriate dose or concentration. The dose or concentration can be further optimized experimentally in a dose response or titration experiment.

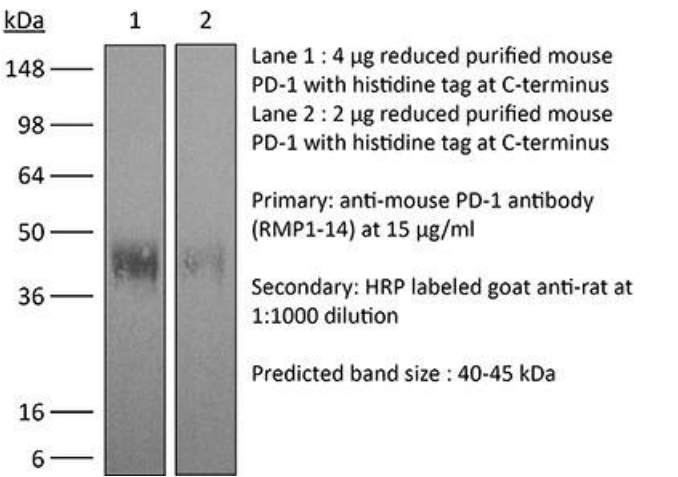
Application References

For a complete list of references, visit [https://bioxcell.com/catalogsearch/result?q=BE0146#tab\\_references](https://bioxcell.com/catalogsearch/result?q=BE0146#tab_references) or scan the QR code below.



Binding Validation

Validation data shown below confirms that this clone binds to its target antigen. For lot specific binding validation data, e-mail [technicalservice@bioxcell.com](mailto:technicalservice@bioxcell.com).



Bio X Cell, LLC  
<https://bioxcell.com>  
+1-866-787-3444  
[customerservice@bioxcell.com](mailto:customerservice@bioxcell.com)

*Conditions: For research use only. Not for use in diagnostic or therapeutic procedures.*  
*Not for resale.*  
**Bio X Cell, Bio X Cell logo, and all other trademarks are the property of Bio X Cell, LLC © 2024 Bio X Cell, LLC**